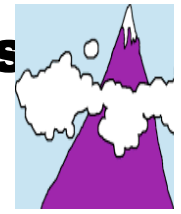


# The Fifth Peak – Dolph’s Class



## NEWS UPDATE

October 28<sup>th</sup>, 2009

### Important Dates

-----  
**October 30th** --  
- All-School  
Assembly - 1:30  
in the gymnasium  
- Halloween  
Parade and Party  
to follow in the  
classrooms

**November 5<sup>th</sup>**  
- Science Fair  
Open House  
6:00 – 7:30 p.m.

**November 6<sup>th</sup>**  
- Science Fair

**November 11<sup>th</sup>**  
Veterans’ Day  
-No School for  
the Kids  
- Teacher  
Work Day

**November 13<sup>th</sup>**  
- Report Cards to  
go home in Friday  
Folders

**November 23<sup>rd</sup>**  
– 27<sup>th</sup>  
Thanksgiving  
Break

**Greetings Families:** Two snow days in October; what a surprise!

Hopefully, school will resume on Friday so that the fifth graders can present the all-school assembly that they’ve been working on these past couple of weeks. The assembly is planned for 1:30 p.m. this Friday in the gym. Following the assembly will be our annual Halloween parade throughout the school and classrooms. We will end the afternoon with the fifth grade party back in our classrooms.

A big “Thank You” goes out to Michelle Mulholland and all the parents and families that are contributing towards making this party a memorable experience for these great kids.

**Science Fair:** Science Fair is next week. Fifth grade students need to bring in their projects for class presentations starting Monday, November 2<sup>nd</sup>. Each student will have the opportunity to present his/her project to the class. There will be a science, writing, and oral language grade earned by the students regarding this assignment. The Science Fair Open House will be next Thursday from 6:00 p.m. – 7:30 p.m. Students will be judged three times at the Science Fair on November 6<sup>th</sup>.

**Social Studies:** Students will be finishing their Age of Exploration mobiles next week and presenting their explorer to the class. This, along with Science Fair presentations, will be valuable oral language practice for the students. The more they can practice at home, the better prepared and more comfortable they will feel in front of the judges and their peers.

Next week we begin our Social Studies unit on the Renaissance. This popular unit takes us to Europe from approx. 1450 – 1600 A.D. We will begin with European geography and life in Renaissance Italy. Soon, students will receive their parts for our Shakespeare play, *The Comedy of Errors*.

### Everyday Mathematics

Division has been our focus for our current math unit. Students have been revisiting some of the strategies that were introduced last year, such as the partial-quotient method. This method has proven very effective at building student number sense when using division. The practice and reinforcement of using estimation as a tool for decimal placement and quotient check has also been stressed during our math lessons. The Unit 4 math test has been pushed back two days and is

### CONTACT INFORMATION

Ms. Lynne Dolph  
[lynne.dolph@bvsd.org](mailto:lynne.dolph@bvsd.org)