



Different Ways to Share

Solve each problem. Draw pictures to help you explain your answer.

NOTE Students find ways to divide a group of objects equally.

SMH 60

1. 2 people share 5 granola bars equally. How many granola bars does each person get?

2. 6 people share 8 waffles equally. How many waffles does each person get?

3. If 4 people share \$2.00 equally, how much does each person get?

Ongoing Review

4. 6 people share 4 sandwiches equally. How much does each person get?

A. $\frac{1}{2}$ B. $\frac{1}{4}$ C. $\frac{2}{3}$ D. $\frac{3}{2}$

Standard 1

- 1b Identify the fractional part of a drawing or a set (restricted to halves, thirds, fourths).
- 2a Using pictures, demonstrate addition and subtraction of proper fractions with common denominators of four or less.

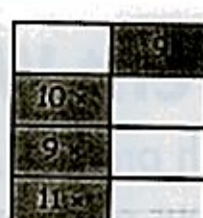
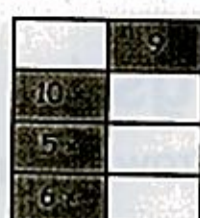
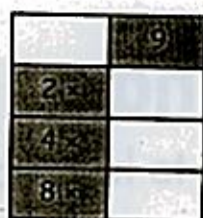
Standard 6

- 3b Demonstrate proficiency with basic addition and subtraction facts.*

6.7 Fraction Addition Equations

MAINTAINING SKILLS

1. Complete each fact series.



2. Calculate
- 15×9
- .

4. Calculate
- 20×9
- .

3. Calculate
- 16×9
- .

5. Calculate
- 21×9
- .

BUILDING FLUENCY

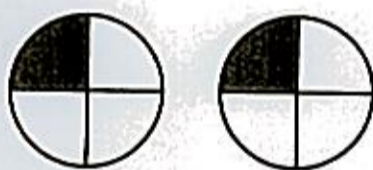
1. One half of one fruit bar is left over.
One fourth of another fruit bar is left over.
Tina gets to eat the leftover pieces.
How much of a fruit bar does Tina get to eat?
Explain your thinking.



4. Diana gets to eat $\frac{3}{4}$ of one brownie and $\frac{1}{4}$ of another brownie. How much of a brownie does Diana get to eat?



2. Charlie gets to eat $\frac{1}{4}$ of one pizza and $\frac{1}{4}$ of another pizza. How much of a pizza does Charlie get to eat?



5. Write a fraction addition equation to show how much of a brownie Diana gets to eat.

6. Mr. Mendez baked 2 hexagonal cakes for the math club. The shaded parts of the hexagons show how much cake is left over. What fraction of a cake is left over?



3. Complete the fraction addition equation to show how much of a pizza Charlie gets to eat.

$$\frac{1}{4} + \frac{1}{4} = \underline{\quad}$$

7. Write a fraction addition equation to show how much of a cake is left over.