

Kohl Communicator

For the most up-to-date information, use our website:
<http://sp.bvsvd.org/schools/kohl>

Kohl Elementary
School

January, 2012

Important Dates in January

January 10th

Student Council 7:30am

January 10th

Garden Club 2:35-3:30pm

January 10th

PTA Meeting 6:00pm

January 11th

Shakespeare Assembly 9am
3rd, 4th and 5th Grade

January 16th

MLK Holiday
NO SCHOOL

January 17th

Lego Club 2:35-3:30pm

January 23rd

Choir Practice 2:35-3:35pm

January 23rd

Skate City 6pm

January 24th

Lego Club 2:35-3:30pm

January 30th

Choir Practice 2:35-3:35pm

Dear Parents,

Happy New Year! I hope your family is looking forward to a happy and productive new year.

We are continuing our efforts in building a caring, kind community with our emphasis on RIDE. This is evident in our classrooms and throughout the building. We have new banners in the cafeteria and I even put reminders in the bathrooms of what it means to be a Kohl "RIDE" Student.

In our efforts around RIDE and Bully Proofing, we have an assembly planned on Wednesday, January 11 at 9:00 for our 3rd, 4th, and 5th grade students. This assembly is by "Colorado Shakespeare Festival" and the play they will be doing is called "The Twelfth Night". The anti-bullying theme will also extend to individual workshops in classrooms for the 3rd grade students. Please feel free to join us for the 40 minute assembly if you are interested. If you would like more information about the performance or their work please see their website at:

<http://www.coloradoshakes.org/education-outreach/shakespeare-in-the-schools>

We continue to look for ways to support our students to build a foundation of a caring and kind community, as well as, gaining additional strategies to intervene and support students when difficult situations arise.

Lastly, I will again have a Lego Club after school. Look for the flyer being sent home through email TODAY for the sessions and times. I really enjoy this time with students and take pleasure in their creativeness and excitement as they build. There are limited spots so please sign up quickly.

Thank you!

Mrs. Kaier

Student Council Update

We collected 1,392 pounds of food during our winter season Kohl Food Drive! Thank you for all of your generous donations.

Please join Student Council in a monthly celebration of our school. On the last Friday of the month, Kohl students are encouraged to wear Kohl colors (blue and white) and Kohl shirts.

Kohl Spirit Days

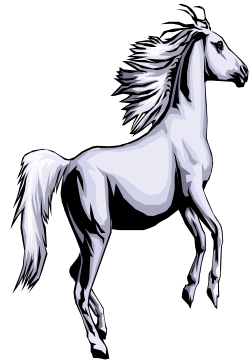
Friday, January 27th

Friday, February 24th

Friday, March 23rd

Friday, April 27th

Friday, May 18th



Student Council is also beginning a new school community project. **Cents for Science** will be an ongoing project in which we encourage students to donate change. The money collected will be used to support science experiences for students at Kohl. Some opportunities include the creation of an outdoor classroom, development of our school garden, science classes, and lab materials.

SPELLING BEE

Congratulations to fifth grader **Isaiah Elges**, winner of Kohl's annual spelling bee. Isaiah correctly spelled **dryness, intruder, laborious, nocturnal, adequate, intrigue, syringe, reimbursable, amphibian, niche, extrapolate, Niagara, literati, hexameter, astrophysicist, gallon, waitress captain, surplus, and luggage** to earn his spot in the district Bee to be held at Monarch HS on Saturday, February 4. Making it to round twelve was 4th place finisher, **Riley Judd**. Round sixteen felled fellow fifth grader **Marisa Emoto** who placed 3rd. Last year's school champion **Kelly Nguyen** placed 2nd. She correctly spelled **gossip, racial, genius, remorseful, pristine, disappearance, irritability, thoroughbred, panickiness, laconic, linguistically, slantindicular, pugilist, reminiscent, polyglot, awful, palace, and scheme** before misspelling **boredom** in the 19th round. Congratulations to all thirty-one students on their hard work.





Kohl Choir will start again Monday, January 23rd.

Our Concert will be Tuesday, May 8th at 6:30.

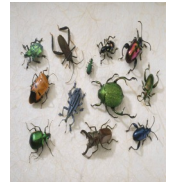
Any 4th or 5th graders interested in joining choir at this time can do so by contacting Miss Bunyan at jayanthi.bunyan@bvsd.org

Thanks!
Jayanthi

2nd Grade Music Program, **BUGZ!**
It will held February 16, 2012, 6:30pm

Look for another announcement in February!

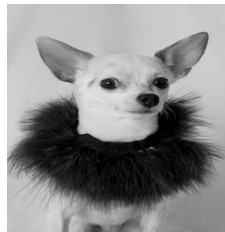
Antwon Owens, BME
Music Education (K-12)
Kohl Elementary School
720-561-8628



Kohl Preschool is looking for some gently use donations. We would love to have:

- a few pretty girls dresses sizes 4-8 for our dress ups if your child has outgrown them
- boys vests
- girls or boys hats

Thank you,
Rochelle Robinette
Kohl Preschool Teacher
720-561-8665



Hearing Rescreening will be Wednesday, February 27th, 9am-12pm.

Only Students that received a referral will be rescreened at this time.

3rd Annual Kohl Elementary 5K Run/Fun Walk

We're excited to announce that the 3rd Annual Kohl Elementary 5K Run /Fun Walk will be held on May 5, 2012.

Registration is now open at
www.kohlelementary5k.com

Register before March 31st to get the early bird pricing of just \$20! Kids 12 and under are only \$15. Entry includes an official event t-shirt, chip timing, fun, food, and fantastic giveaways!



Happy New Year from Kohl's PTA!!!

Please join us at the next General Meeting on January 10, 2012, 6pm in the library. Lots of information and refreshments will be served!

A special thank you for the donation made to the PTA to help Mr. Gonzales' class put together "goody bags" that were distributed by A Precious Child. The money donated allowed the class to purchase small toys and some personal hygiene items. In addition, several area dentists donated toothbrushes, paste and floss.

Heartfelt thanks to; Dr. Christopher Biety of Biety Orthodontics, Dr. Cynthia Sheeks of Just Grins, Dr. Bob McBride of McBride Family Dental, and Young Dentistry. A huge shout out to our own Kohl mom, Kelli Turner, for rounding up t-shirts, lip balm and treats to add to the much-appreciated bags that brightened some lives during the season of giving.

Good work, Mr. G. and Class!!



OPEN ENROLLMENT ENDS JANUARY 13, 2012

Boulder Valley School District Open Enrollment application period **Ends January 13, 2012**. If you would like your child to attend a school other than the one he or she is currently enrolled in, you must submit an application online at <http://bvsd.org/openenrollment> or visit the Open Enrollment office no later than **4:00 p.m., January 13, 2012**. Applications received after that date means your student will be added to the bottom of any existing wait-list for that school and grade.

Students who are open enrolled to their current elementary or middle school, and are completing the last grade at that school, will be enrolled in their district designated neighborhood school for the next grade level unless they are accepted through Open Enrollment to another middle or high school.

Thank you,
Bruce K. Messinger, Ph.D.
Superintendent

Parent Engagement Network presents:

Thriving During the Elementary Years
Identifying Learning Problems Early
By Dr. Jan Hittelman

We all learn differently and we all have strengths and weaknesses in terms of our learning processes. There are also many different explanations for why students do not achieve at a level that is expected. For some students it's about motivation. For other students it can also be a function of difficulties with speech, language processing, auditory and visual processing, written expression, emotional/behavioral factors, as well as overall intelligence.

The earlier these learning challenges are identified, the sooner children can receive help to improve and/or compensate for these difficulties. When early identification does not occur, these problems tend to get worse as does the child's attitude towards school. In some cases, these challenges are identified in preschool and, through proper remediation, addressed. In many cases these challenges become more apparent in elementary school. For the child's academic success as well as positive sense of self, it is important to identify and attempt remediate these difficulties as early as possible. Children spend most of their waking hours in school and if they experience a high degree of failure, the damage to their self-esteem can be significant. This is why early intervention is key.

If you suspect that your child is having difficulties in school, the right place to start is with their classroom teacher. Request an opportunity to meet with the teacher and discuss your concerns and get their feedback as well. In addition, the teacher may recommend additional services within the school. In some cases additional evaluations by school specialists may be necessary. A private evaluation by a licensed psychologist is another option. Through the use of psychological, academic, speech/language and learning processing testing, it is possible to get a more detailed and clear picture of a child's strengths and weakness relative to other children of the same age. Depending on the severity of the areas of weakness additional services at the school may be available.

If your gut tells you that your child is not learning as he or she should be, seek out the guidance of school staff and make your concerns known. The longer you wait the more difficult it will be for your child to get back on track.

UPCOMING PEN EVENT:

HOPE

Providing hope & inspiration in the area of suicide prevention and depression

Presenters: HOPE Coalition & Colie's Closet

Thursday, January 26, 6:30-8:30pm

First Presbyterian Church (1820 15th Street, Boulder)

Learn more about PEN by visiting their website: www.parentengagementnetwork.org or by contacting Paula Nelson, PEN chair (pjn6225@yahoo.com, 303-880-6030) or Betsy Fox, PEN Lead Coach, (foxbetsy123@msn.com, 720-563-7007).

Dr. Jan Hittelman, a licensed psychologist, is Director of Boulder Psychological Services and the Founder of the Boulder Counseling Cooperative. Questions or comments for this monthly column can be sent via email to: jan.hittelman@gmail.com, or by phone: 720-217-3270

January 2012

February 2012

January 2012

S	M	T	W	T	F	S
5	6	7	8	9	10	11
12	13	14	15	16	17	18
19	20	21	22	23	24	25
26	27	28	29			

S	M	T	W	T	F	S
1	2	3	4	5	6	7
8	9	10	11	12	13	14
15	16	17	18	19	20	21
22	23	24	25	26	27	28
29	30	31				

	Sunday	Monday	Tuesday	Wednesday	Thursday	Friday	Saturday
Jan 1, 12		2	3	4	5	6	7
Jan 1 - 7	Winter Break New Year's Day		In-Service - Work Day	8:00am Students Return 2:35pm Chess Club 2:35pm 4th Grade Writing Club	8:15am Spelling Bee	2:35pm 4th Grade Writing Club	
8		9	10	11	12	13	14
Jan 8 - 14			7:30am Student Council 2:40pm Garden Club 5:30pm PTA Board Meeting 6:00pm PTA Meeting	9:00am Shakespeare Assembly 3rd, 4th and 5th Grades 2:35pm 4th Grade Writing Club		2:35pm 4th Grade Writing Club	
15		16	17	18	19	20	21
Jan 15 - 21		Holiday- MLK Day	2:35pm Lego Club	2:35pm 4th Grade Writing Club		2:35pm 4th Grade Writing Club	
22		23	24	25	26	27	28
Jan 22 - 28		2:40pm Choir Practice 6:00pm Skate City	2:35pm Lego Club	2:30pm PTA Board 2:35pm 4th Grade Writing Club		Kohl Spirit Day - Wear Blue 2:35pm 4th Grade Writing Club	
29		30	31	Feb 1	2	3	4
Jan 29 - Feb 4		2:40pm Choir Practice	2:35pm Lego Club				

February 2012

February 2012

S	M	T	W	T	F	S
5	6	7	8	9	10	11
12	13	14	15	16	17	18
19	20	21	22	23	24	25
26	27	28	29			

March 2012

S	M	T	W	T	F	S
4	5	6	7	8	9	10
11	12	13	14	15	16	17
18	19	20	21	22	23	24
25	26	27	28	29	30	31

Sunday	Monday	Tuesday	Wednesday	Thursday	Friday	Saturday
Jan 29	30	31	Feb 1	2	3	4
			2:35pm Chess Club 2:35pm 4th Grade Writing Club		2:35pm 4th Grade Writing Club	
5	6	7	8	9	10	11
	2:40pm Choir Practice	2:35pm Lego Club 2:40pm Garden Club 6:00pm PTA Meeting	2:35pm 4th Grade Writing Club		1:30pm Valentine Party 6:00pm PTA Dance - Sweetheart Dance	
12	13	14	15	16	17	18
	3rd Grade TCAP Reading 2:40pm Choir Practice 4:00pm Conference Sheets Posted	2:35pm 4th Grade Writing Club	2:35pm 4th Grade Writing Club	6:30pm 2nd Grade Music Program	End of Trimester 2:35pm 4th Grade Writing Club	
19	20	21	22	23	24	25
	Holiday - President's Day	In-Service - Work Day	Ash Wednesday 2:35pm 4th Grade Writing Club		Kohl Spirit Day - Wear School Home 2:30pm Report Cards 2:35pm 4th Grade Writing Club	
26	27	28	29	Mar 1	2	3
	2:40pm Choir Practice	3:00pm Evening Parent-Teacher Conferences	2:30pm PTA Board Meeting 2:35pm 4th Grade Writing Club			

Jan 29 - Feb 4

Feb 5 - 11

Feb 12 - 18

Feb 19 - 25

Feb 26 - Mar 3