

PHYSICAL SCIENCE CLASS INFORMATION AND POLICIES

Mr. Prior
Room: 2605
Text: CPO Foundations of Physical Science

Greetings!

Welcome to Physical Science. This class is designed to introduce you to the basic principles of chemistry and physics. We will not cover everything that there is to know in these fields. Not even close. The most important thing that I think you can learn in the class is how to problem solve. By sharpening your thinking skills you will learn how to break down a big problem into smaller, more manageable parts. This is a skill that will be very valuable to you in the future, regardless of where life takes you.

Where to find me:

My office is in room 604 and I have first and fifth period plan. I am available after school by appointment. My office phone is 303-561-2250. If you wish to e-mail me my address is: chris.prior@bvsd.org

What to bring - **EVERY DAY:**

- 1) A 3 ring notebook.
- 2) Pens and pencils in a zipper pouch. A ruler.
- 3) A calculator - no sharing of calculators will be permitted during tests and quizzes.
- 4) Your planner and my monthly calendar
- 5) Textbook – I will tell you when to bring it.
- 6) Lab book if you take it home.

Attendance:

It is imperative that you show up for class every day. If you are absent it is **your responsibility** to find out what material was covered. I will not discuss this with you during class time if time does not permit. You will **need to have a buddy** in class to fill you in on particulars. **Use your calendar** to keep up, or you can come find me in my office during my office hours or after school for other issues.

Tardies:

I expect you to be in your seat and ready to work when the bell rings. If you are late for a test or a quiz and if you are excused then we can work something out. If you are unexcused you will just have less time to finish. If you are more than 5 minutes late it is recorded as an absence. This is school policy (see student handbook pg. 32). All in all - **Be here on time!**

Make-up work:

If you are gone for only one day anything due that day will be due upon your return (see student handbook pg. 32). The class calendar is set up so that you have multiple days to turn in an assignment in most cases. You may turn work in early. Don't wait until the last day. For multiple day absences (planned or unplanned) see the calendar posted, talk to your responsible buddy, and/or you can see me during my office hours or after school

Grades:

Your semester grades will be based on the total number of points you earn divided by the total number of points possible. The grading scale is as follows: 90-100%= A, 80-89%= B, 70-79% =C, 60-69%= D, less than 60%= F. Points will be earned through tests, quizzes, labs, homework, and competitions. I do not round up. A 79.999 is still a C at semester. Be sure to log on to IC to check your grades in progress. Report any errors to me immediately so I can edit your grade. **Do not** throw your papers away as they may be needed in proof of an error in scoring.

Tests/Quizzes:

Some of you will finish before others in the class. As a matter of courtesy I expect that there will be silence in the room so that those who are still working can concentrate. Those who disturb their classmates will be asked to leave.. Missing school the day before a test or quiz does not excuse you from taking the test or quiz. Remember to highlight upcoming tests and quizzes on your calendar. You must see me to schedule make-up tests and quizzes. The lowest unit test score during each semester will be dropped. Yes, there is a cumulative final exam at the end of each semester.

Labs/Homework/Late work

Both are due at the beginning of the period on the designated due date. Late work will be accepted until the end of the unit ranging from 90% to 60% credit depending on the number of days late.

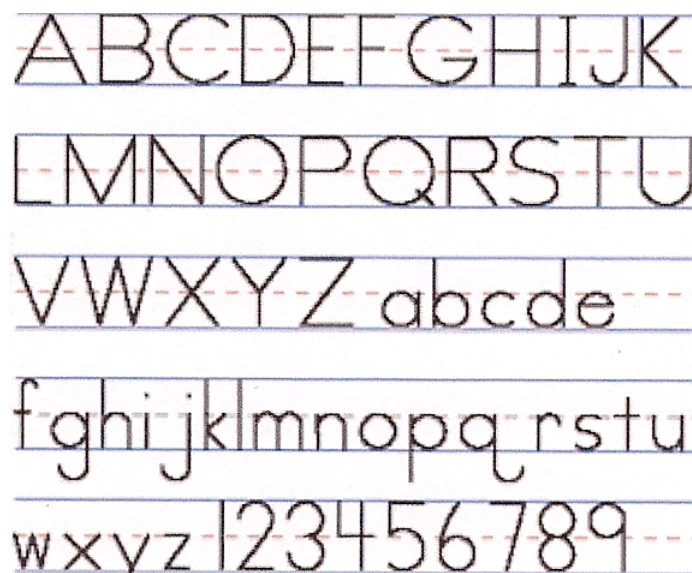
Written Work Requirements:

The requirements spelled out in this document apply to all written work done in Physical Science.

General

Name, date and period must be in the far upper right hand corner of the paper. An appropriate title must appear on the top line of the first page, centered. Numbered problems must be done in order, with the number circled, boxed or underlined. Leave a space of one line between problems. Pages must be stapled together – no tape, paper clips, or folding. Remove ragged edges from paper.

Pencil is preferred over pen because it can be erased. This is especially true for mathematical problems. Penmanship should follow the guidelines learned in earlier grades, and should be no smaller than 1/8 inch in height (this is about normal for college ruled paper). See below for a guide on proper letter form. If pencil is used, make sure it is dark enough, and that erasures are thorough.



Mathematical Problems

Where an equation is used, show the equation first without numbers – variables only. After the equation is shown, insert the numbers. Circle or box answer. It is not acceptable to answer any mathematical problem without showing work. The reasonings “I did it on my calculator” or “I did it in my head” may be true, but will still result in no credit being given. Calculator work needs to be copied onto the paper to show the teacher that you know how to do the steps involved, and to help you to determine where you might be making mistakes.

Math problems do not require complete sentences or questions written out. It is not required to write: “The density of carbon dioxide is 1.2×10^{-3} g/ml” after a series of mathematical steps have been performed to produce this number.

Short Answer/Essay Questions

These types of questions require that either the question be written out, or that the question is included in the answer. Complete sentences are required. Short answer or essay answers do not need to be circled or boxed. When writing, **do not** start sentences with “because”! Answer questions with complete sentences unless otherwise noted. In general, poor quality papers will be handed back ungraded.

Grading

The following abbreviations will be used by the teacher when grading your paper to indicate why points have been deducted: N-neatness; P-penmanship; CS-complete sentences; SW-show work; I-answer is incomplete; U-answer is unclear to the reader (the answer doesn't make sense); SE-straight edge should have been used; L – a label or title is missing; F – format, as discussed in this document, is incorrect

Neatness:

This is a science class with lab equipment and chemicals in use. Because of this, utmost care must be used to maintain a safe environment:

- No food or drinks at the lab tables.**
- Drinks only in a container that has a lid.
- No phones, ipods, etc.** (Out of sight, out of mind)(student handbook pg. 24).
- Leave the class with a clean desk, clean floor, and a clean lab (including the sink).

Behavior:

If you cannot relax, listen, or participate in a mature and constructive manner I will ask you to go sit in the hallway for a period of time. Do not argue, just go and relax. Get a drink of water or go to the bathroom. Do not go to the cafeteria. I will come and talk to you when I have time.

A final word:

I am here to help you. To help you most effectively you need to help me. I am not a mind reader. Therefore, should you not understand some concept or problem you will need to see me as soon as possible. Ultimately I will see who knows the material and who does not on tests and quizzes. Be fair to yourself, see me during TAP, or at some arranged time, go to the o-zone or others for help. You are not alone. There are many resources for you at BHS.