



SCHOOL INFORMATION

Community Montessori Office	.....	720-561-3700
805 Gillaspie Dr		
Boulder, 80305		
FAX	.....	720-561-3701
Attendance Line	.....	720-561-5408
SAC	.....	720-561-3777
Transportation	.....	720-561-5125 (Boulder)
	.....	720-561-5126 (Lafayette)
Web Site:	<a href="http://schools.bvsd.org/communitymontessori/">http://schools.bvsd.org/communitymontessori/</a>	
E-mail addresses:	<a href="mailto:shannon.minch@bvsd.org">shannon.minch@bvsd.org</a> , Principal	
	<a href="mailto:rosa.invernizze@bvsd.org">rosa.invernizze@bvsd.org</a> , Bilingual Liaison	
	<a href="mailto:kathy.kinney@bvsd.org">kathy.kinney@bvsd.org</a> , Principal's Assistant	



MARK YOUR CALENDAR

December 10	-----	Barnes & Noble Book Fair – 11:00 AM – 5:00 PM
December 19 – Jan 3	-----	No School – Holiday/Teacher Workday
January 5	-----	Open House – 5:00 – 6:00 PM
January 12	-----	Public Tour – 9:00 AM
January 12	-----	NOTE: <b>NO</b> SAC/PTA Meeting in January
January 13	-----	Open Enrollment Closes – 4:00 PM
January 16	-----	No School – Martin Luther King Day
January 27	-----	Coffee w/the Principal – 8:00 AM – Rm 114
February 9	-----	SAC/PTA Meeting – 5:30 – 7:30 PM – Rm 114
February 16	-----	Parent Visiting Night – A-M 5-6PM; N-Z 6-7PM
February 20 & 21	-----	No School – President's Day/Teacher Workday
February 24	-----	Report Card Home

FROM THE PRINCIPAL...

Dear Community Montessori Parents /Guardians,

Open Enrollment

This is a busy time of year! We have many holidays and the kids are working hard in their classrooms. It is also open enrollment time from November 28<sup>th</sup> -January 13<sup>th</sup>. We have started tours for prospective students. We have an Open House on January 5<sup>th</sup> from 5-6pm and one last tour on Thursday January 12<sup>th</sup> from 9-10am. Please tell your friends who are looking for a wonderful school to attend. This is a very important time for us as we are 100% open enrollment. If your child is already enrolled at Community Montessori, you do not have to participate in open enrollment. You should have received a blue re-enrollment form in the Friday folder on December 2<sup>nd</sup>. It was to be turned in by December 9<sup>th</sup>. Thank you.

Construction NewsWhen your children return in January, we will be in the next phase of construction. The northwest hallway will be closed of to student traffic. The estimated time of completion is in April. At that point Community Montessori will inhabit the entire building. We are very excited about the additional space!

### Parking Lot Safety

Our new procedure is definitely a work in progress. We ask that you do not park in the areas of the south parking lot that are striped. We have had a couple of near misses both with cars and pedestrians. Please do not drop your children off in front of the school. It is a safety issue with the busses and with children who are walking through the parking lot in the cross walks. And lastly, the first few parking spots are for primary parents in the am and at pick up time (11:30 and 2:30.) We appreciate your patience and consideration regarding this matter.

### Principal Coffee

On November 15<sup>th</sup> at 6pm, we held our second principal coffee. It was a small group with a rich conversation and community building. The conversation topics were as follows:

**Transition to Middle Schools:** We talked about how the children from Community Montessori report that they feel they are more than prepared with their organizational skills and their ability for self-direction and collaboration. One 8<sup>th</sup> grader I spoke to who was back visiting said the two things that were a surprise was the amount of homework and note taking, but she quickly adapted. My experience with kids at Boulder High who went through Community Montessori was that they were leaders in Student Council, Environmental Club and Animal Rights Club. They were all very strong academically. The kids were incredibly well-rounded.

**Fundraisers/School Events:** The question was asked about school events/fundraisers and the age appropriateness. One mom of a preschooler was asking about Book Bingo and other activities and how they work for the primary students. We talked about our next fundraisers which are the garage sale on March 17<sup>th</sup> and Kermesse which is April 28<sup>th</sup>.

**Nurtured Heart Parent Class:** It was asked if we are going to have another Nurtured Heart class. The answer is yes. We are also looking in to offering a class in Spanish.

**Building Community:** We discussed making sure Community Montessori is welcoming for all parents. We want to make sure that parents feel connected and embraced. Sometimes it is difficult for new parents or parents who speak a different language to connect. It is very important to us to have a strong partnership with families and we are open to ideas to make all people feel comfortable and welcome. One idea was adopt-a-family. Other ideas for parents to connect were exercise class for parents, a Community Montessori group to train and run the Boulder Boulder, cooking lessons, Spanish/English classes for adults, book club and game night with pizza.

Thank you to all that attended- parents and teachers, and to the PTA for setting it up. Our next principal coffee is January 27<sup>th</sup> at 8am. Hope to see you there!

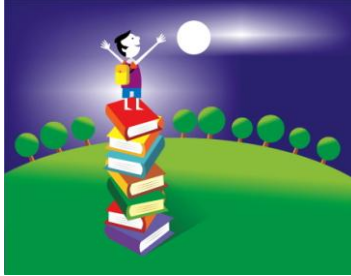
### Other News:

**Community Montessori Staff Appreciation Lunch:** Thank you to our wonderful parents for the awesome lunch on December 1<sup>st</sup>. We are so fortunate to be treated to such a great lunch! We appreciate your effort and thoughtfulness!

**CELA Testing:** Students who are learning English and are not yet proficient will participate in the Colorado English Language Acquisition (CELA) test in January. CELA testing provides us with data that helps drive instruction and support the academic growth of our students.

**TCAP Testing:** In February we begin the Transitional Colorado Assessment Program (TCAP replaces CSAP.) The bulk of the testing is in March. As we near the time, we will give more details about the dates. We ask that your children are well rested and have a good breakfast. The testing is part of the assessments we use to drive our instruction to best support your student's growth.

## COMMUNITY MONTESSORI BOOK FAIR!!!



**WHERE:** Boulder's BARNES & NOBLE  
**WHEN:** Saturday, Dec. 10 – 11:00 AM – 5:00 PM  
**WHY:** Music, Artwork, Activities, and best of all.....**BOOKS**

**Come join us for a fun time and shopping  
to benefit Community Montessori's Library Media Center  
SEE YOU THERE!**

*(Mention Community Montessori **any time** during the day when you make a purchase to have a percentage of the sale donated to our library Barnes & Noble hours are from 10:00 AM – 10:00 PM.)*

## Personal Giving Campaign– donate by Dec 13th for 2011 Tax Deductions



Final call for 2011. Date extended to December 13th, 9AM to receive your tax deduction for 2011.

Here is the latest- As of November 18th, we have collected \$6900 from 24 of our 200 families. That puts us at 27% of our goal.

Please help the best you can and remember no amount is too small!

To donate, please drop off or send your check to the office: Community Montessori, Attn: PGC, 805 Gillaspie, Boulder CO 80305. If you have any questions about the PGC or how to donate, please contact Denice Choka at [denice.choka@leanintree.com](mailto:denice.choka@leanintree.com), or Rosa Invernizzi 720 561-3721 (Bi-lingual liaison). Thank you for your support.



Please welcome our new Garden to Table (G2T) team for the year of 2012! Our first activity of the year will be "Awaken the Garden" in March. We look forward to working with you!

**Garden Group** Jane Breetzke & Johanna Quesenberry  
**Communication Group** Makiko Aumock & Masako Brauneis  
**Curriculum Group** Sonya Guram & Jess Hernandez  
**Worker Bee Wednesday** Jesse Huang & Kristin Savory  
**Cooking - Spring Salad** Jess Hernandez & Kristin Savory  
**Cooking - Fall** Ali Dejohn & Kelli Duggan  
**G2T History Book** Claudia Roppel & Elizabeth Ross  
**Bulletin Board** Denise Della Rocco  
**SIT/PTA** Emily Tessar  
**Photos** Elizabeth Ross

The Garden to Table program started at Community Montessori during the 2008-2009 school year. The program is aimed at enriching school education and inspiring students to adopt healthy and sustainable lifestyles. The theme-based program

allows teachers to integrate lessons with core curriculum and provide students with hands-on learning opportunities to connect to the food they put in their bodies and the environment that supports its growth.

If you want to learn more about G2T, please check our website

<http://www.bvsd.org/schools/communitymontessori/programs/curriculum/Pages/GardentoTable.aspx> and/or contact Jess Hernandez at [Jess@jph.net](mailto:Jess@jph.net) Your suggestions and volunteer time are always welcome!

## UPDATES



- ☞ The **King Soopers Neighborhood Reward Card program** is one of the easiest ways to make money for our school throughout the year. Simply use the card for all of your purchases and King Soopers donates 5% to Community Montessori. And don't forget to ask friends and family if they would like to use a card to support our kids and our school. Or give them as gift cards this holiday season! Please contact Laura or Crystal with any questions or to set up a time to meet and purchase cards. Cards are \$5 each (and have a \$5 value pre-loaded).

Laura Guedelhofer: 303.999.0112 or [laura.guedelhofer@gmail.com](mailto:laura.guedelhofer@gmail.com) (drop off and AM pick-ups)

Crystal Cargill: 720.771.2762 or [csnow76@yahoo.com](mailto:csnow76@yahoo.com) (drop off and PM pick-ups)

- ☞ Please be sure to have your child(ren) check the **Lost & Found** to reunite with any items that are theirs! All items still remaining at the end of the school day on Friday, December 17<sup>th</sup> will be donated to charity. Thank you!

- ☞ **Change to the Calendar- Parent Teacher Conference dates and times are being changed for the spring.** The time will be 2:40-6:40pm and the dates are as follows:

Tuesday, March 13, 2012

Thursday, March 15, 2012

Wednesday, March 21, 2012

Thursday, March 22, 2012

- ☞ Our school is participating in **Share-a-Gift** again this year. The Share-a-Gift box is NOW IN OUR SCHOOL. Share-a-Gift is an annual, all-volunteer toy collection and distribution holiday project encompassing the Boulder Valley Schools area. Last year over 700 households (1700 boys and girls, ages birth to 14) received these community donations. To be successful, Share-a-Gift needs thousands of high quality, new and used toys, games, books, and puzzles. School collections are the biggest source of toys for Share-a-Gift. This collection allows children to meaningfully participate in gift giving by sharing their own gently used or new toys with less fortunate children in Boulder county. Toys may be dropped off in the Share-a-Gift box in our school now through Wednesday, December 14th. Thanks for sharing with your community. If you would like to volunteer to help with this worthwhile project, please go to [volunteers@shareagift.org](mailto:volunteers@shareagift.org) or call 720-446-8691. Please see the attached flyer.