

Fall 2008 Report on

Community Montessori

Message from the Principal

Community Montessori is a Montessori focus school in the Boulder Valley School District. A grassroots effort 13 years ago, the school continues to expand to full capacity and celebrate a community of joyful learners. The school's success can be attributed to a wonderful staff and tremendous parent dedication and involvement.

Together our community of parents and staff has re-visited and re-committed to our school's mission and goals. Our enrollment for the coming year indicates that we will have increased opportunity to embrace the multicultural essence of Montessori and celebrate the diversity in our world. Our teachers have been excited to continue professional development to learn more strategies to teach English language learners and all learners. As always, the Montessori principles and philosophy guide the details of our work.

This past year has again been filled with academic success. We continue to differentiate our instructional program to foster maximum growth for each child. We experienced outstanding achievement by students as evaluated on numerous measures and we are a state-designated "School of Excellence."

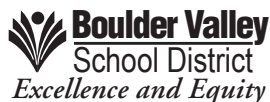
Students have also participated in a variety of activities to help create a more peaceful, equitable and sustainable future. A restorative vs. retributive approach to conflict is embraced. Respect for self, others and the environment is the cornerstone of all decisions and expectations.

Finally, this past year we have again witnessed a key result of Montessori education—children who love to work. It's true—given the chance to choose their work and their pace, children happily immerse themselves in purposeful activity. They have a love of work and learning from the start and we believe it is our responsibility as educators to nurture that love.

Sincerely,

Marlene Skovsted
Principal

Community Montessori
805 Gillaspie Drive
Boulder, CO, 80305
Phone: 303.444.7479
Principal: Marlene Skovsted
[http://schools.bvsd.org/
communitymontessori](http://schools.bvsd.org/communitymontessori)



Program Characteristics

- Respect for self, others and environment is central to every aspect of a student's experience at Community Montessori.
- Students have specific freedoms and independent choices within clear, safe and consistent limits; self-discipline is fostered through personal responsibility.
- Program has an early childhood component which builds foundation for elementary.
- Learning cycle progresses through multiage groupings with same teacher: primary (ages 3-6), lower elementary (grades 1st- 3rd), upper elementary (grades 4th-5th).
- Classroom environments are ordered and aesthetically pleasing.
- Concentration is lengthened and depth of study encouraged through uninterrupted learning blocks.
- Each classroom has a full complement of hands-on learning materials that are developmentally-sequenced and progress from concrete to abstract.
- Curriculum subject matter is integrated and students explore a variety of resources beyond the classroom.
- Instructional strategies and classroom format adapt to specific student needs.
- Parental involvement in classroom and school community is integral.
- Parent education on the Montessori model is provided.
- Teachers have both Montessori and State Certification.
- Administrator is trained and experienced in Montessori Method.
- Community Montessori program characteristics are aligned with current research in the areas of "best practices" and "brain-based education."

**This school is fully accredited by the district
in compliance with the Colorado State accreditation indicators.**

Special Programs and Opportunities

A variety of co-curricular classes are offered at Community Montessori before and after school. These include art, music, science, language, physical education, and scouts. Fun, age-appropriate activities are also available in the after-care program until 6:00 pm. This program is available to children ages 5 years through 5th grade.

Throughout the school year, children have an opportunity to participate in Peer Mediation and Restorative Justice sessions. Field trips and speakers enhance the curriculum on an ongoing basis. We host various visiting authors, presenters and musicians. Classroom events such as poetry readings, drama productions, music programs and literature discussions are held.

Community Montessori is the unique combination of learning and accomplishing academic achievement in a seamless way, without pressure or focus on test results. Rather, while learning, the children are building relationships with classmates, expressing personal interests and creativity, and developing potential as both communal and individual beings. They are almost completely unaware of how much they are accomplishing.

It is a kind of magic.

Tricia and Jim Fitzpatrick,
parents of Katie and Galen--alumni

Teacher Quality

Federal laws enacted in 2002 require school districts to hire teachers who meet identified standards and who are deemed highly qualified in their field of endorsement. Approximately 99.7 percent of Boulder Valley School District's teachers currently meet or exceed the federal requirements. The district has an exceptionally well-qualified cadre of teachers, who on average have 12 years of teaching experience. Over half of our teachers hold advanced degrees. For any teacher who does not currently meet the federal criteria, a plan exists to become highly qualified by the end of the school year.

Additional information on staff classification, salaries and professional experience of teachers is included in the School Accountability Report by the Colorado Department of Education.

To request specific information about a teacher's qualifications, parents may fill out a Teacher Qualification Request form. These forms are available from the school office, at the BVSD website (go to <http://www.bvsd.org/Parents> and scroll to the bottom of the page for the link), or at the district Education Center Human Resources department (6500 East Arapahoe Road). To ensure that fair and uniform information is provided, no requests for teacher qualification will be processed at the school. All requests must be processed by the Boulder Valley School District's Department of Human Resources.

Student Teacher Ratio: 16.3:1

According to the 2007-08 Snapshot Survey. . .

- 93 percent of parents say teachers at this school encourage their student to do his/her best.
- 95 percent of parents agree teachers at this school are committed to maximizing student achievement.

Parent Satisfaction

According to the 2007-08 Snapshot Survey. . .

- 94 percent of parents say their child has a positive attitude about his/her school.
- 95 percent agree that the school sets high and realistic expectations for their child.
- 93 percent of parents say they feel welcome at this school.

What Parents Are Saying

"Community Montessori creates an atmosphere where children respect each other, process and execute hands-on learning, and embrace the joy of their experience. What more could a parent wish for? When our family signed on to Community Montessori 10 years ago, I had no idea what an incredible experience lay ahead. The enthusiasm for learning and the methods developed by Maria Montessori are far reaching for many children. The process grows with each child who adopts previous skills to the next level as the child requires. My children have thrived and I am proud to have my children's educational start be so positive. This experience will have an everlasting positive impact on my children."

Clarissa King, parent of Ben and Megan--alumni

"It is an amazing feeling and sense of security knowing that you are sending your children off to a place that nurtures, teaches, excites and builds their self esteem. Community Montessori has given me, my husband and our three children this gift that I'm not sure we can ever repay."

Loran and Conrad Lattes, parents of Ben-age 8, Sophie-age 11 and Emma-age 14

School Climate

Assurance of our good faith effort of implementation of a safe school plan, including use of a threat assessment team to evaluate threats of violence, is provided in our annual End-of-Year Report which is available in the school office.

This report provides evidence that

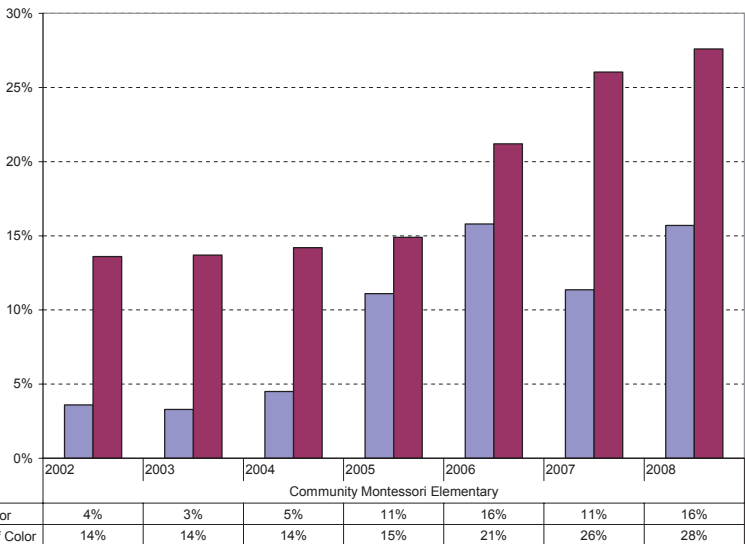
- the school improvement team analyzes and uses data from the student climate survey;
- the school is taking specific actions to continuously improve the safe, civil learning environment of the school;
- the school has a mechanism for students to report anonymously statements or conduct that worries them;
- the school is working to overcome any “code of silence” that may exist in the current student culture;
- the school has adopted some form of a bully-prevention program (e.g. conflict mediation, character education, restorative justice); and
- a threat assessment team has been established at the school.

According to the 2007-08 Parent Snapshot and Student Climate Surveys . . .

- 86 percent of students say they feel safe at school.
- 91 percent of students say they have friends at school.
- 96 percent of parents say teachers treat their student with respect.
- 99 percent of parents say students of different cultural, racial and ethnic backgrounds are treated with respect at this school.

Demographics

Percentage of Staff and Students of Color

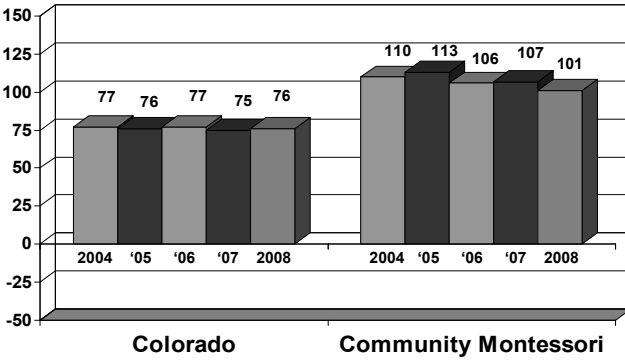


Gender				Ethnicity									
Female		Male		American Indian		African American		Caucasian		Asian		Latino	
#	%	#	%	#	%	#	%	#	%	#	%	#	%
106	46.5%	122	53.5%	0	0%	3	1.3%	165	72.4%	23	10.1%	37	16.2%

Special Programs											
ELL (English Language Learners)		Lunch				SPED (Special Education Students)	504 (non-SPED Disabled Students)		TAG (Talented and Gifted Students)		
		Free		Reduced							
#	%	#	%	#	%	#	%	#	%	#	%
30	13.2%	36	15.8%	9	3.9%	18	7.9%	0	0%	15	6.6%

State Assessments

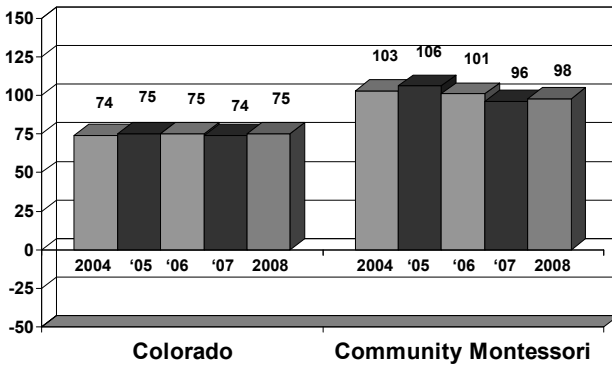
CSAP Reading Weighted Index Results for All Grades



Standard Error for School

- 03-04 +/- 5
- 04-05 +/- 5
- 05-06 +/- 5
- 06-07 +/- 5
- 07-08 +/- 5

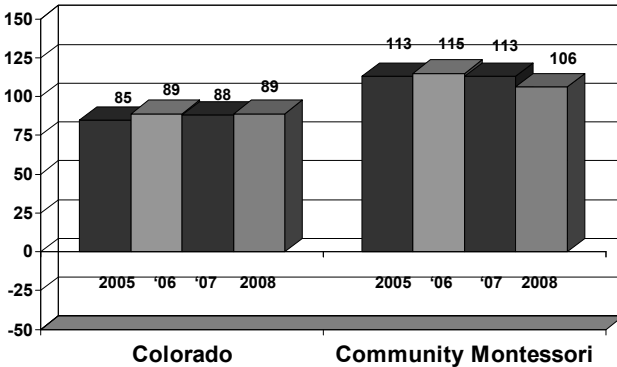
CSAP Writing Weighted Index Results for All Grades



Standard Error for School

- 03-04 +/- 5
- 04-05 +/- 5
- 05-06 +/- 5
- 06-07 +/- 5
- 07-08 +/- 5

CSAP Math Weighted Index Results for All Grades

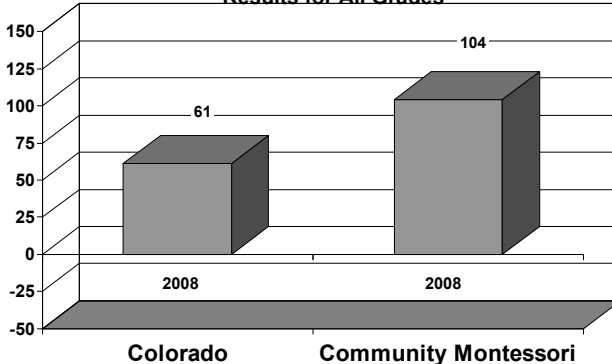


Standard Error for School

- 04-05 +/- 7
- 05-06 +/- 7
- 06-07 +/- 7
- 07-08 +/- 7

Beginning in spring 2005, CSAP math tests were administered to 3rd and 4th graders as well as 5th graders, who were the only elementary grade taking it in prior years. Therefore, only four years of data are available for all three grades.

CSAP Science Weighted Index Results for All Grades



Standard Error for School

- 07-08 +/- 12

In Spring 2008, a new science CSAP test was administered to students, therefore only one year of data is now available. Only 5th grade students took this assessment.

District Assessments

The district is required to assess and report student achievement of standards in social studies, art, music, physical education and world languages as these are not assessed by CSAP. Boulder Valley determines student achievement in these areas by having teachers administer district-developed common assessments and use the results of these assessments to inform their professional judgment regarding individual student performance relative to identified content standards. Other student work may also be included in the evidence that teachers use to make their determinations.

Results for the elementary level music, art and physical education standards are reported below. Assessment in other areas is being phased in over the next few years. Results for district assessed standards are reported as the percent of students who are proficient and above.

Music			Visual Arts		
			<i>Elements/Design/ Sensory and Expressive Features</i>		
			2007-08		
School	play	96 %	School	100 %	
	read/write	88 %		BVSD	99 %
	sing	96 %			
BVSD	play	92 %			
	read/write	92 %			
	sing	85 %			

Physical Education		
2007-08		
School	cognitive	100 %
	fitness	75 %
	skill	100 %
BVSD	cognitive	80 %
	fitness	84 %
	skill	89 %

Achievement Data

CSAP data is presented in the form of weighted index. To calculate the weighted index, each performance level is given an assigned value and then the values are averaged. An advanced proficient score is worth 150, proficient is 100, partially proficient is 50 and unsatisfactory and not tested receive -50. If all students were to achieve a score of proficient, a school's weighted index score would be 100. The weighted index calculation works in much the same way as a grade point average (GPA). Point values are given for each grade (or level of proficiency) and the average falls between the values associated with those categories.

Please note, weighted index calculations must be viewed in light of standard error. Standard error gives a rough idea of how much we might expect the average score for all students to vary due to chance, based on the number of students who were assessed.