

SAFETY AND SCHOOL ENVIRONMENT

Non-CSAP Course Offerings

Your School Offers	does	does not
• art.....	<input checked="" type="checkbox"/>	<input type="checkbox"/>
• drama or theater.....	<input type="checkbox"/>	<input checked="" type="checkbox"/>
• music.....	<input checked="" type="checkbox"/>	<input type="checkbox"/>
• physical education.....	<input checked="" type="checkbox"/>	<input type="checkbox"/>
• opportunity for civic or community engagement.....	<input type="checkbox"/>	<input checked="" type="checkbox"/>
• internet safety program.....	<input type="checkbox"/>	<input checked="" type="checkbox"/>
• International Baccalaureate.....	<input type="checkbox"/>	<input checked="" type="checkbox"/>
• extracurricular activities.....	<input type="checkbox"/>	<input checked="" type="checkbox"/>
• athletics.....	<input type="checkbox"/>	<input checked="" type="checkbox"/>
• preschool program.....	<input checked="" type="checkbox"/>	<input type="checkbox"/>
• full-day kindergarten program.....	<input checked="" type="checkbox"/>	<input type="checkbox"/>
• before-and-after-school care program.....	<input checked="" type="checkbox"/>	<input type="checkbox"/>

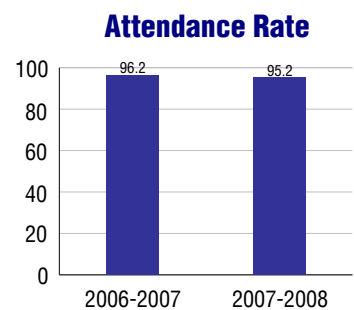
Safety and Discipline

Safe schools are a top priority for parents, teachers, and communities. Your school safety and discipline record for the 2007-2008 school year is:

Type of Incident	Number of Incidents Reported	Percent of Total Incidents
Substance Abuse - Drugs		
Substance Abuse - Alcohol		
Substance Abuse - Tobacco		
Felony Assaults		
Fights		
Possession of Dangerous Weapons		
Other Violations Code of Conduct		

Student Attendance and School Calendar

2007-2008	Your School
Enrollment	288
Average Daily Attendance	274
Student Dropouts	N/A



Student Information Over Time

	2005-2006	2006-2007	2007-2008
Student Enrollment Stability	97.2%	98.1%	98.3%
Students Eligible for Free and Reduced Lunch	8.5 %	15.6 %	15.6 %

For more information and further details about this report, visit www.state.co.us/schools
 Colorado Department of Education, 201 East Colfax Ave. Denver, CO 80203
Community Montessori School
 0480/1883/E
 805 Gillaspie Dr . Boulder, CO 80305 . 303-444-7479
 12/16/2008

DISTRICT TAXPAYER'S REPORT

Sources of School District Revenue	2007	District Source of Funds 2007
Local Tax Contribution	\$176,041,040	
State Tax Contribution	58,090,975	
Federal Grants	12,835,216	
State Grants	9,903,387	
Private/Partnership Grants	422,995	
Other Discretionary Income	30,901,527	
Total District Operating Revenue	\$288,195,140	
Long Term Debt Proceeds	121,415,603	
Total District Revenue	\$409,610,743	
Total District Operating Revenue Per Pupil =	\$10,708	
Total District Revenue Per Pupil (Including Long Term Debt) =	\$15,219	
District Per Pupil Operating Revenue =	\$6,037	
State Average Per Pupil Operating Revenue =	\$6,080	
District Use of Funds	2007	
Instructional & Instructional Support	\$178,985,142	
Administration	21,341,716	
Building & Facilities Maintenance	20,630,263	
Operational Expenditures	20,051,111	
Debt Service	14,820,266	
Other Expenditures	12,007,926	
Total District Operating Expenditures	\$267,836,424	
Capital Expenditures	6,576,806	
Total District Use of Funds	\$274,413,230	

District Debt and Capital Construction & Equipment

Total Outstanding Bonded Debt	\$245,875,000
Average Annual Percentage Interest Rate on Debt	4.24%
Amount Raised from Most Recent Bond	\$296,800,000
Amount Spent on New Buildings During Last 2 Years	\$6,474,149

Accreditation

Accreditation is Colorado's primary accountability system, incorporating achievement levels, academic growth, achievement gaps, post-secondary readiness, improvement planning, and compliance. The state accredits districts and districts accredit individual schools.

District Accreditation Status for the 2007-2008 school year:

Voter Approved Funding Changes

Your community did /did not hold an election in November 2006

The following items have been approved by voters:

- TABOR Override
- Bond \$296,800,000
- Mill Levy Increase

COMMUNITY MONTESSORI SCHOOL



BOULDER VALLEY RE 2

<http://schools.bvsd.org/communitymontessori/>

School Accountability Report 2007-2008 School Year

School Performance Summary

Overall Academic Performance on State Assessments **Excellent**

Academic Growth of Students **Typical**

Winner of a John Irwin School of Excellence for the 2007-2008 School Year

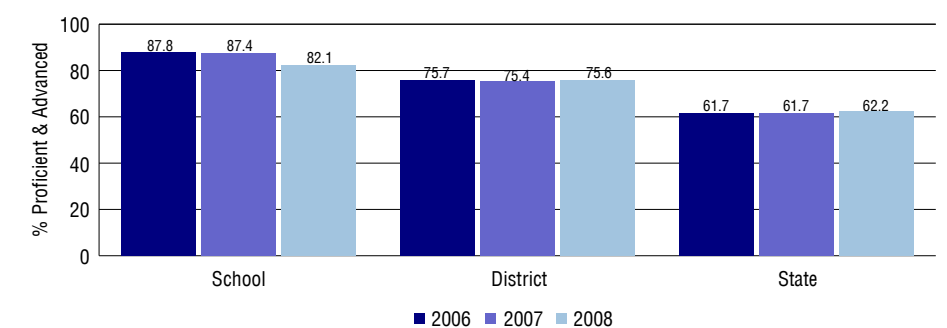
Overall Academic Performance on State Assessments

Each school in the State received a rating of "Excellent", "High", "Average", "Low", or "Unsatisfactory" for student academic performance based on 2007-2008 CSAP and COACT results. The rating is calculated using weighted percentages of each CSAP proficiency level for all content area and grade results for the school, as well as average COACT Reading, Writing, and Math Grade 11 results.

Academic Growth of Students

Each school in the State received a rating of "Low", "Typical", or "High" for student academic growth based on CSAP results. The calculation method is new for 2007-2008. The rating is calculated using student percentile scores matched over two years. More information about the Overall Academic Performance rating and Academic Growth of Students calculations can be found here: http://www.cde.state.co.us/cdeassess/SAR_Info.html.

Percent Proficient and Advanced for Elementary Grades for All Content Areas



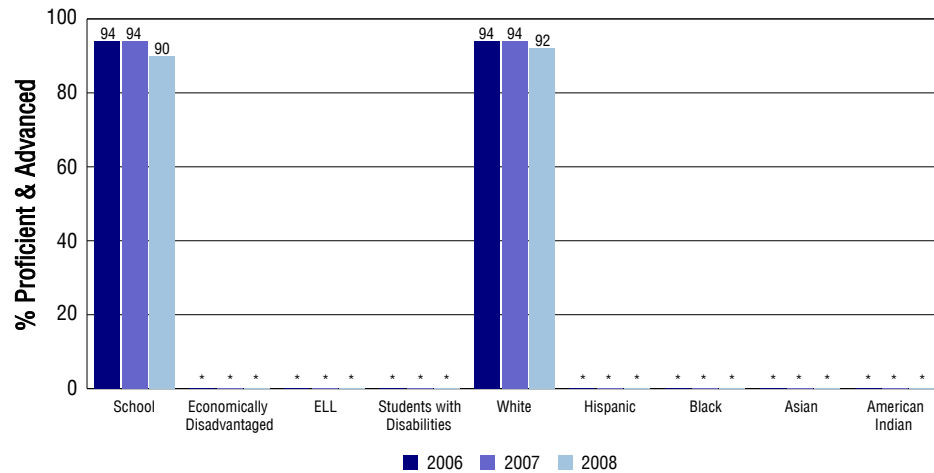
Student Test Scores Used For Calculating Overall Academic Performance

94.2%	Test Scores Counted
5.8%	Test Scores not used due to Language
0.0%	Test Scores not used due to New Student

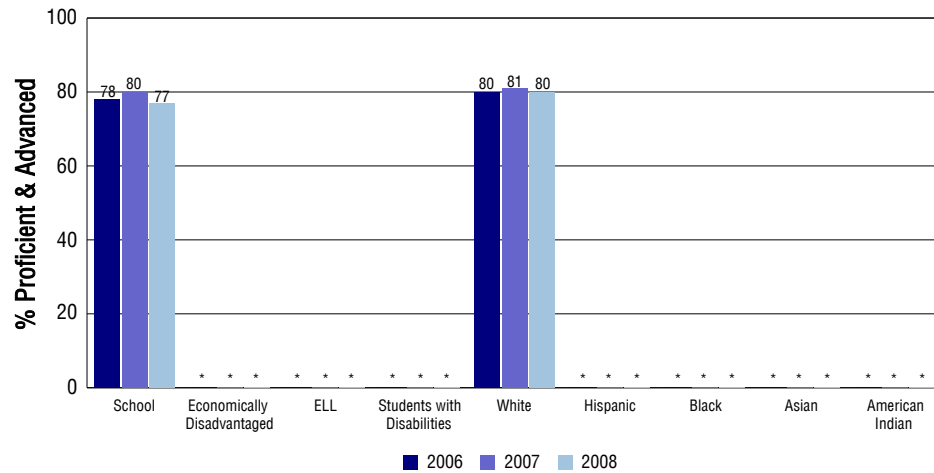
STUDENT PERFORMANCE

These graphs show the percent Proficient and Advanced trends over the past three years for Reading, Writing, and Math. Results are presented for the entire school for all reported grades as well as for different subgroups. Note: * indicates any group with less than 16 student results to be reported.

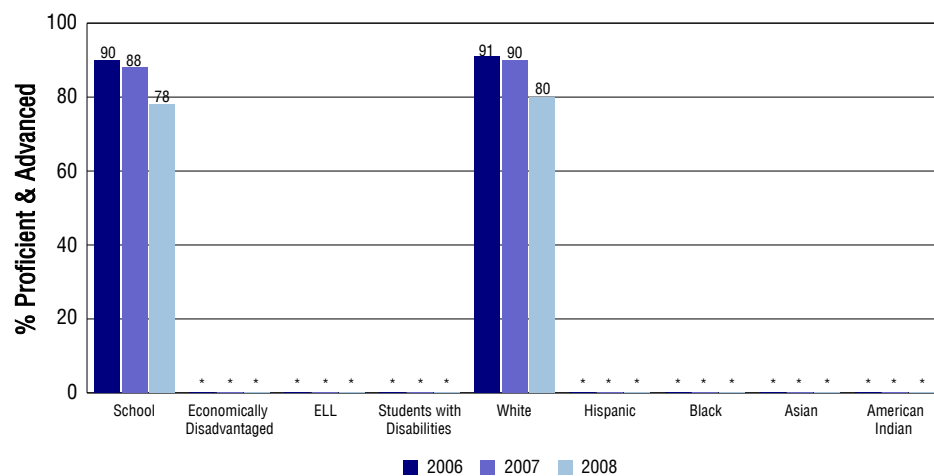
Reading



Writing



Math



SCHOOL INFORMATION

School Pride (as submitted by your district)

- We are a quality Montessori program, aligned with state standards and BVSD strategic initiatives, which challenges the potential of every child.
- We honor each student's individual and unique developmental and learning style by providing differentiated instruction in multi-age classrooms.
- We graduate respectful, responsible life-long learners with the skills and commitment to make a positive contribution to society.
- We partner with families to create an environment that gives students, parents and staff the opportunity to celebrate diversity.

School Goals (as submitted by your district)

Achievement: Increase academic achievement in specific content areas through a curriculum and instruction based on "best practices" and "brain-based education" aligned with our Montessori program. **Equity:** Continue to serve as a model of socioeconomic de-stratification for the district. **Promote multicultural programs** that meet the needs of our diverse population and build a strong community. **Increase skills and knowledge of second-language learners** through sheltered instruction. **Organization:** Create a safe and positive learning environment that protects and respects the rights of all individuals. Teach a consistent anti-bias curriculum across all levels.

No Child Left Behind - Adequate Yearly Progress

Did your school make AYP in reading? Yes Math? Yes
 How many targets does your school have? 12 Met? 12

Based on this school's academic performance, your child may be eligible for one or more of the following; ask your school if your child qualifies for:

Extra academic instruction either before or after-school, or in the summer
 Mentoring

For additional information regarding Adequate Yearly Progress please visit
<http://www.cde.state.co.us/FedPrograms/ayp/index.asp>

How Community Montessori School Compares To Elementary Schools Within A 75-Mile Radius

School	Program Type	Academic Performance	Academic Growth
Bear Creek Elementary School		Excellent	High
Creekside Elementary School At Martin Park		Average	Typical
Mesa Elementary School		Excellent	High
Boulder Community School/Integrated Studies		High	Typical
High Peaks Elementary School		Excellent	High
Horizons K-8 School	Charter, Alternative	Excellent	High
University Hill Elementary School		Average	Typical
Eisenhower Elementary School		High	Typical
Flatirons Elementary School		High	Typical
Whittier Elementary School		High	Typical

ABOUT OUR STAFF

School Employment

Each year, your district reports to the Colorado Department of Education on the number of adults who work in your school, as well as the type of work they do. Last year, your school employed:

	Your School		District	
	Full Time	Part Time	Full Time	Part Time
Teachers	12	7	1511	377
Paraprofessionals	6	19	386	660
Administrators	1	0	123	17
Other Professionals	0	2	217	144
School Support	2	5	599	309
School Counselors	0	0	42	27
School Librarians	0	1	35	15
Total Staff	54		4282	

Students per Teacher Ratio

	Student Enrollment	Students per Teacher
Grade 1	44	17.6
Grade 2	51	20.4
Grade 3	30	15
Grade 4	24	14.4
Grade 5	28	16.8
Grade 6	0	0

Professional Experience of Teachers

	Your School	District
Average years of teaching experience	14	12
Percent of teachers teaching in the subject in which they received their degree	N/A	N/A
Number of teachers with Masters or Doctoral degrees	12	1185
Teachers with 3 years or more of teaching experience	18	1636
Teachers with less than 3 years of teaching experience	1	252
Number of professional development days	11	10

Salaries

	Your School	District	State
Average Teacher Salary	\$56,430	\$53,223	\$47,494
Average Administrator Salary	\$88,253	\$90,370	\$80,444

Principal: Marlene Skovsted

Number of years as Principal at this school: 8

Number of years as Principal at any school: 8