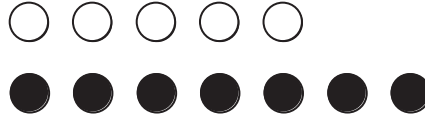


Model Addition of Integers

Write the addition expression shown by the counters and then find the answer.

White counters represent positive numbers.
Black counters represent negative numbers.

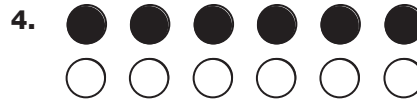
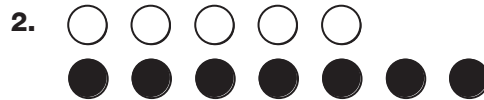
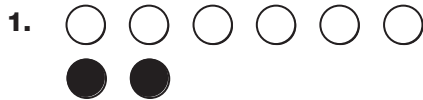


Solve $+5 + -7$.

Step 1: Match opposites. Each pair of opposites equals zero.

Step 2: Count the leftover counters. They represent the sum.
There are 2 black counters leftover.
The sum is -2 .
 $+5 + -7 = -2$

Write the addition expression shown by the counters and find the sum.



Use two-color counters to find each sum.

5. $+4 + +4$

6. $-3 + +4$

7. $-4 + -1$

8. $+2 + -5$
