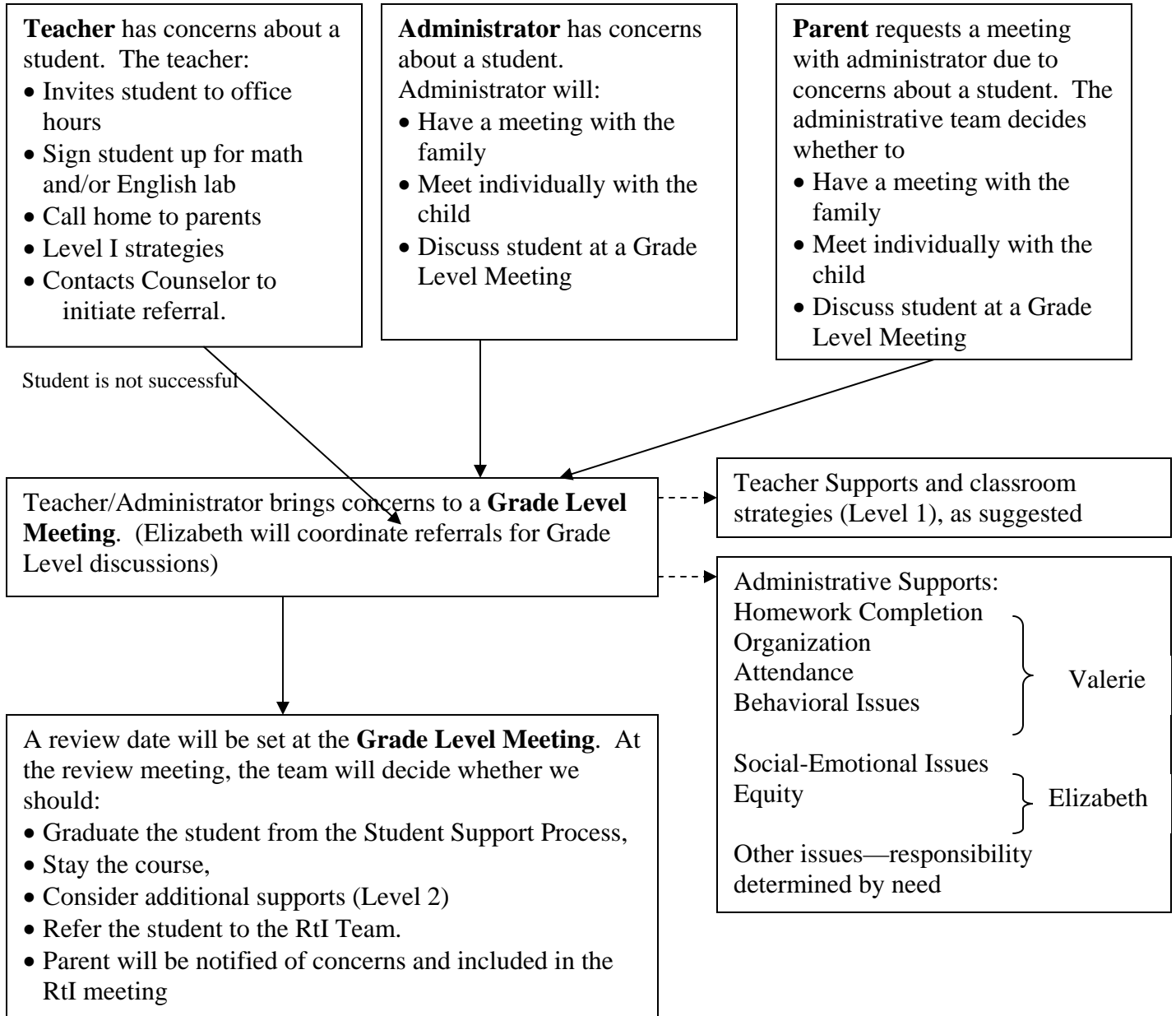


Response to Intervention Process (RtI) at Summit

RtI is a school-wide program which offers supports to all students geared to the level they need. It is designed to address the needs of students who are proficient or advanced according to state standards, but are struggling according to Summit standards. We require all students to make a good faith effort to access our curriculum and supports before providing more intensive interventions.

Below is a flowchart illustrating Summit's RtI Process:



*Parent communication and input may occur at any point in the process but are most likely at the steps so indicated in the flowchart.